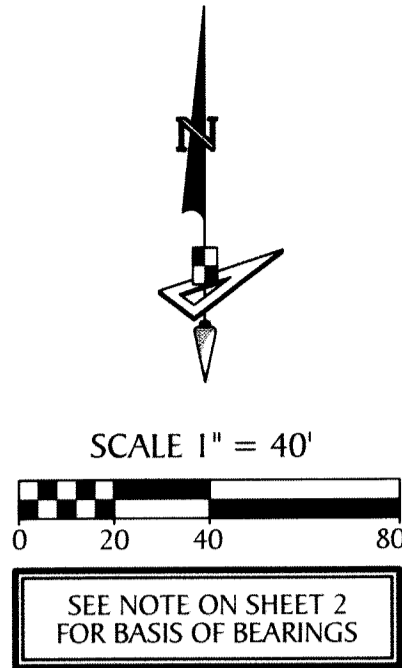


MEADOWS OF WESTLAKE - PHASE II

A SUBDIVISION IN SECTION 6, TOWNSHIP 43 SOUTH, RANGE 41 EAST,
CITY OF WESTLAKE, PALM BEACH COUNTY, FLORIDA, BEING A REPLAT
OF TRACT R AND OPEN SPACE TRACT #10 THROUGH OPEN SPACE TRACT #14 INCLUSIVE,
MEADOWS OF WESTLAKE - PHASE I, PLAT BOOK 127, PAGES 140 THROUGH 153,
PUBLIC RECORDS OF PALM BEACH COUNTY, FLORIDA



104

SCALE 1" = 40'

SEE NOTE ON SHEET 2 FOR BASIS OF BEARINGS

96
MEADOWS OF WESTLAKE
PHASE I
(P.B. 127, PG(s). 140-153)

97
MEADOWS OF WESTLAKE
PHASE I
(P.B. 127, PG(s). 140-153)

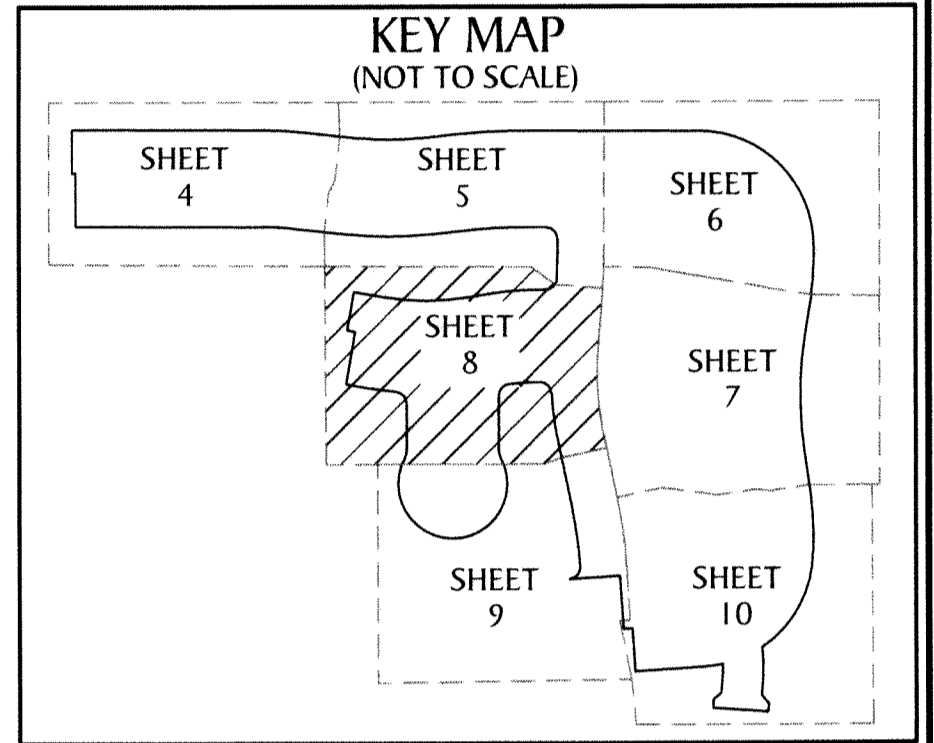
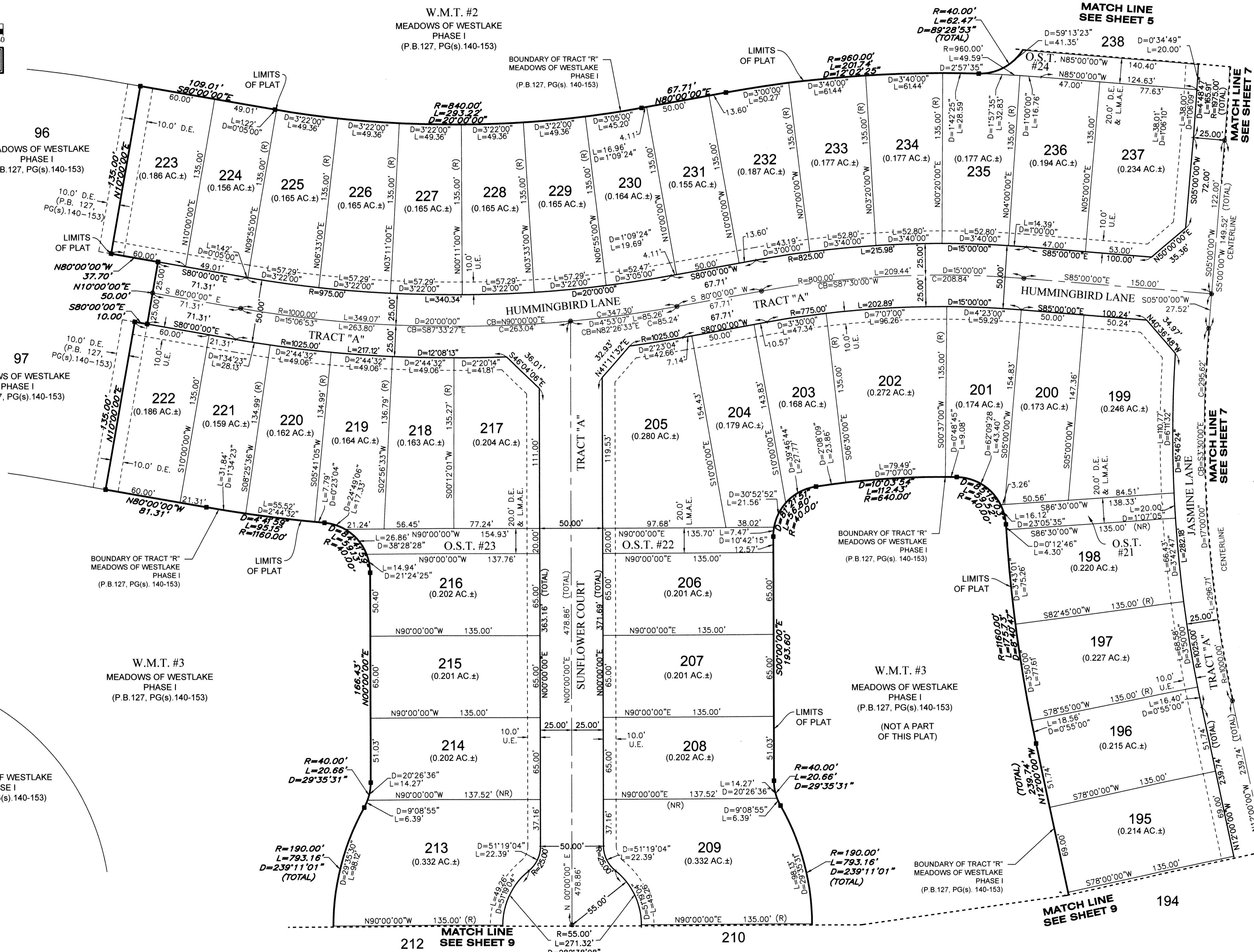
MEADOWS OF WESTLAKE
PHASE I
(P.B. 127, PG(s). 140-153)

W.M.T. #3
MEADOWS OF WESTLAKE
PHASE I
(P.B. 127, PG(s). 140-153)

W.M.T. #2
MEADOWS OF WESTLAKE
PHASE I
(P.B. 127, PG(s). 140-153)

W.M.T. #3
MEADOWS OF WESTLAKE
PHASE I
(P.B. 127, PG(s). 140-153)

W.M.T. #3
MEADOWS OF WESTLAKE
PHASE I
(P.B. 127, PG(s). 140-153)



- LEGEND**
- P.O.B. ----- POINT OF BEGINNING
 - P.O.C. ----- POINT OF COMMENCEMENT
 - P.B. ----- PLAT BOOK
 - D.B. ----- DEED BOOK
 - PG./PG(s) ----- PAGE(S)
 - NAD ----- NORTH AMERICAN DATUM
 - W.M.T. ----- WATER MANAGEMENT TRACT
 - O.S.T. ----- OPEN SPACE TRACT
 - R.T. ----- RECREATION TRACT
 - P.B.C. ----- PALM BEACH COUNTY
 - U.E. ----- UTILITY EASEMENT
 - D.E. ----- DRAINAGE EASEMENT
 - L.M.A.E. ----- LAKE MAINTENANCE ACCESS EASEMENT
 - 6-43-41 ----- SECTION-TOWNSHIP-RANGE
 - R ----- RADIUS
 - L ----- ARC LENGTH
 - D ----- DELTA ANGLE
 - CB ----- CHORD BEARING
 - C ----- CHORD
 - R/W ----- RIGHT-OF-WAY
 - (R) ----- RADIAL
 - (NR) ----- NON-RADIAL
 - PRM ----- PERMANENT REFERENCE MONUMENT
 - ----- PERMANENT CONTROL POINT
 - ----- FOUND PERMANENT REFERENCE MONUMENT
 - ----- SET 4"x4" CONCRETE MONUMENT WITH 2" ALUMINUM DISK STAMPED "PRM LB 7768"



4152 W. Blue Heron Blvd. Suite 105
Riviera Beach, FL 33404
Phone: (561) 444-2720
www.geopointsurveying.com
Licensed Business Number LB 7768

Sheet No. 8 of 10 Sheets